

# HAMMERSMITH ACADEMY

## NEED FOR EXPANSION

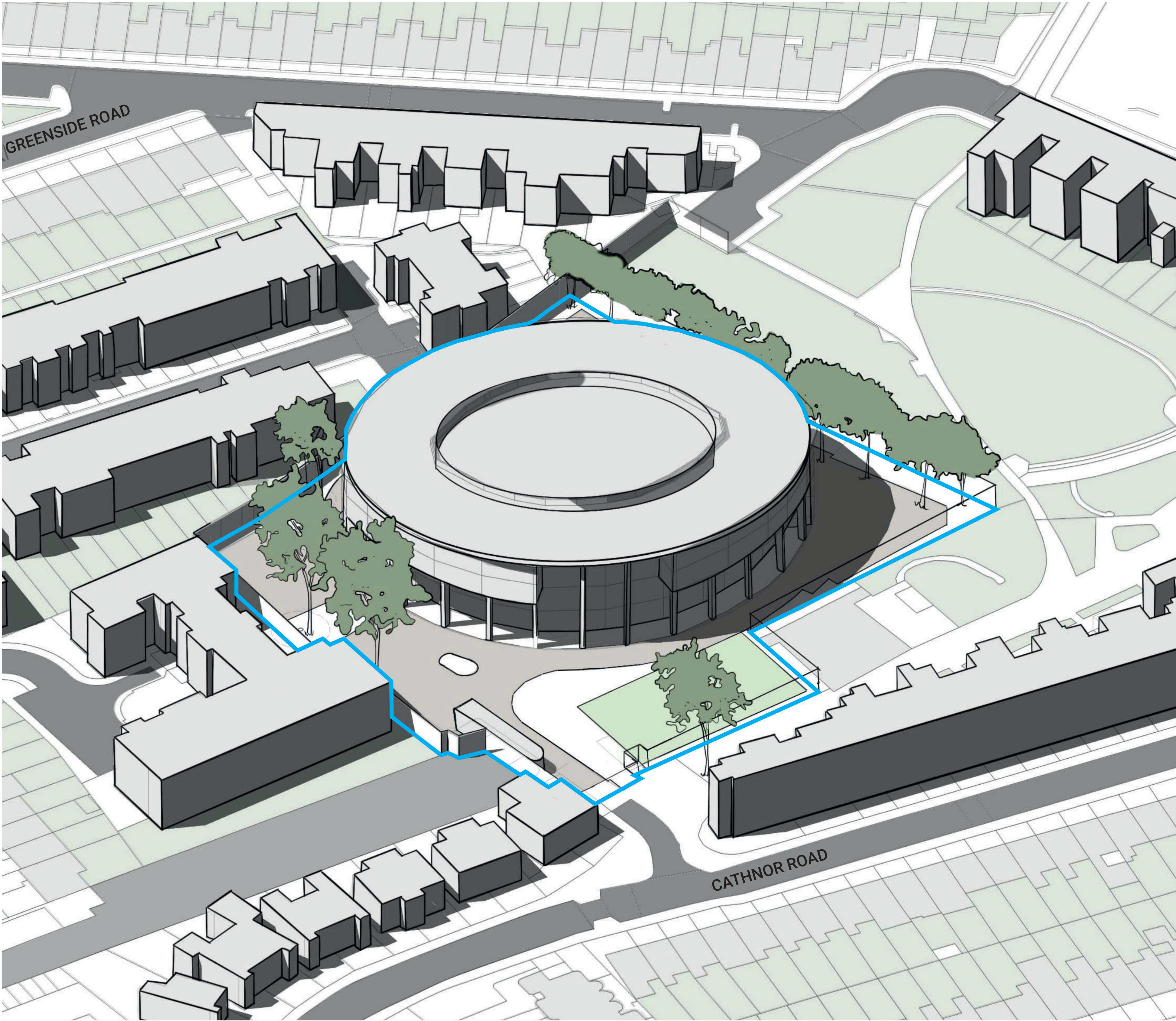
- Hammersmith Academy is an all-ability co-educational secondary academy for students aged 11 to 18 years.
- The Academy specialises in creative and digital media and information and technology. It was opened in September 2011.
- Due to an increased demand in the local area Hammersmith Academy is looking to expand its Special Educational Needs (SEN) and sixth form provision with an overall student increase from 940 to 975 students.
- Following a review to optimise the existing Academy building, additional teaching, SEN and relating administration space is still required outside of the existing building footprint to support and future-proof their education offering.

### PROPOSED TEACHING AND PROFESSIONAL SERVICES BUILDING

- The design and location of the Teaching and Professional Services Building has been informed to improve the day to day running of the Academy and minimise impact on the neighbouring properties.
- It has been developed by a full design team, including Architects, Structural and Civil Engineers, Mechanical and Electrical Engineers, Planning Consultants and Fire and Acoustic Consultants, etc.
- An initial pre-application meeting with the London Borough of Hammersmith and Fulham (LBHF) has also been carried out.

To give you, as local residents, an opportunity to input into the design and comment on the proposals, please review our progress to date across these boards and provide comments on the Feedback Form.

KEY:  
Academy Boundary



THE SITE



SITE ANALYSIS

SITE OPPORTUNITIES

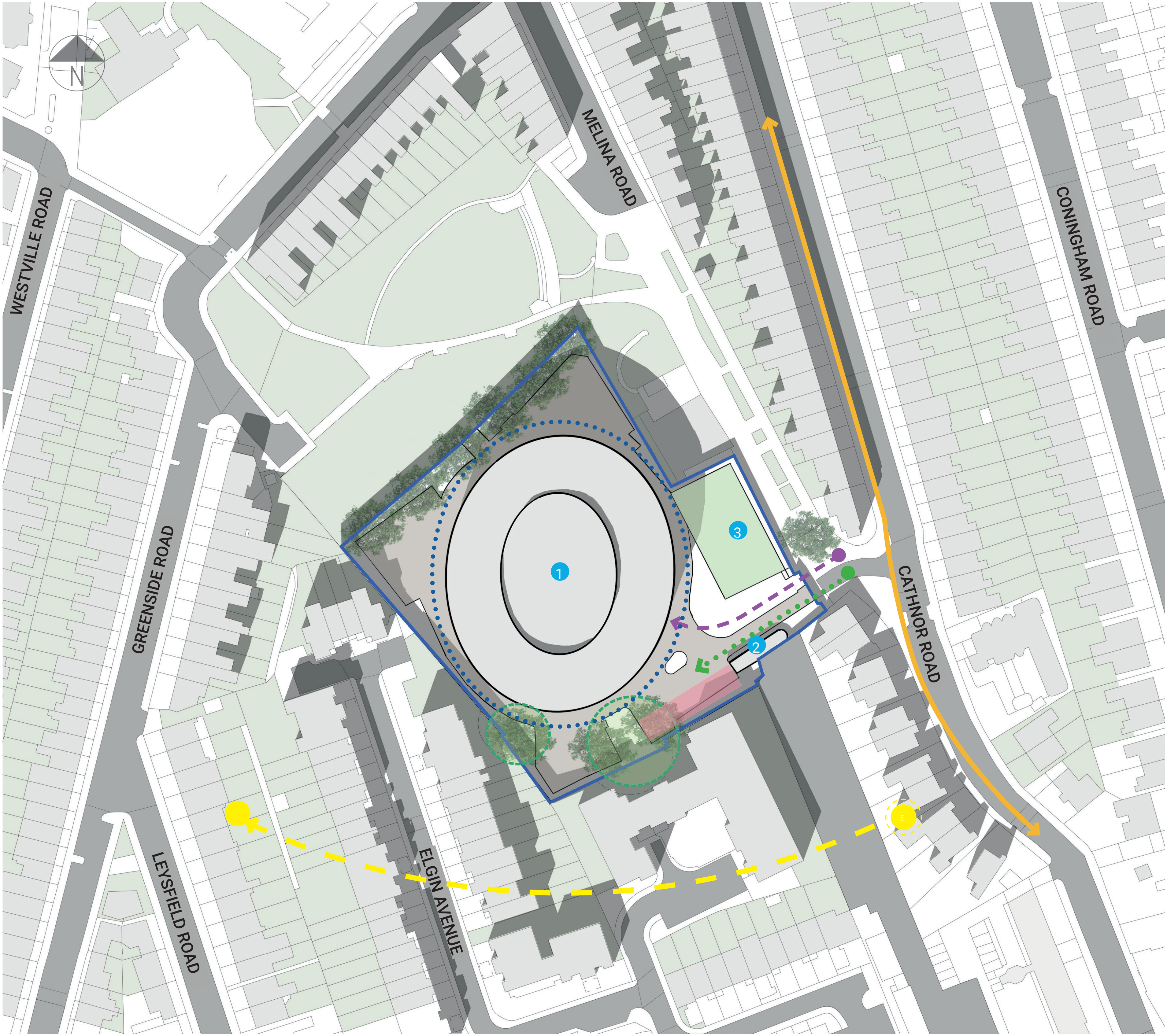
- New point of arrival with new Teaching and Professional Services Building
- Enable Academy to expand education offer and future proof provisions by creating flexible, accessible spaces
- Separate pedestrian and vehicle access for safeguarding while retaining existing parking provision
- Energy efficient design to help produce own energy supply

SITE CONSTRAINTS

- Need to ensure privacy of surrounding properties is maintained
- Tight and constrained urban site
- South facing elevations may suffer solar gain
- Site access and deliveries to be carefully managed

KEY:

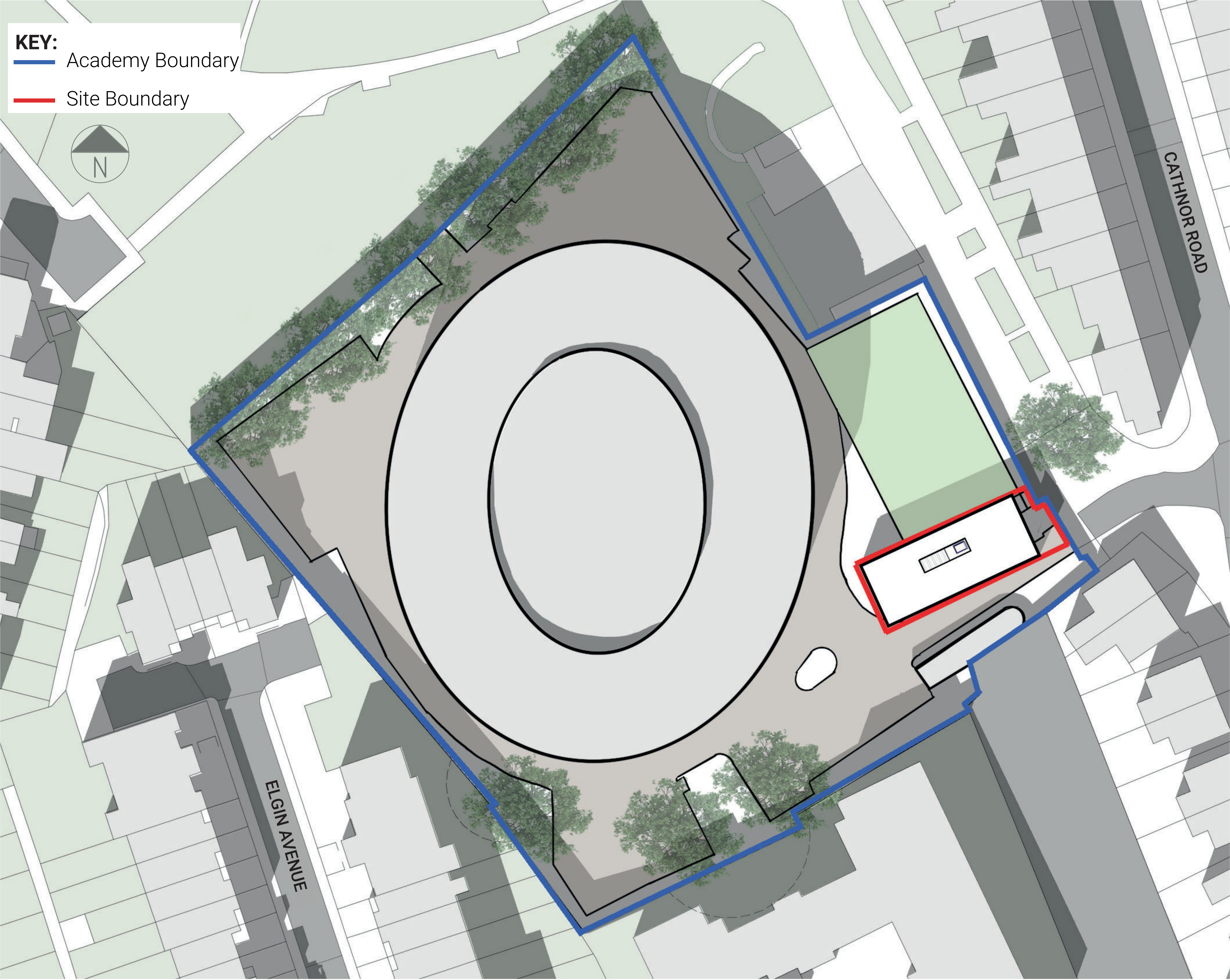
- Academy Boundary
- ↔ Two-way major road
- Pedestrian access / routes
- Vehicle access / routes
- Sun path
- Car parking to be retained
- Tree route protection
- Required 7m fire distance from Academy
- 1 Main Academy building
- 2 Existing single storey plant on site
- 3 Existing MUGA



EXISTING SITE PLAN



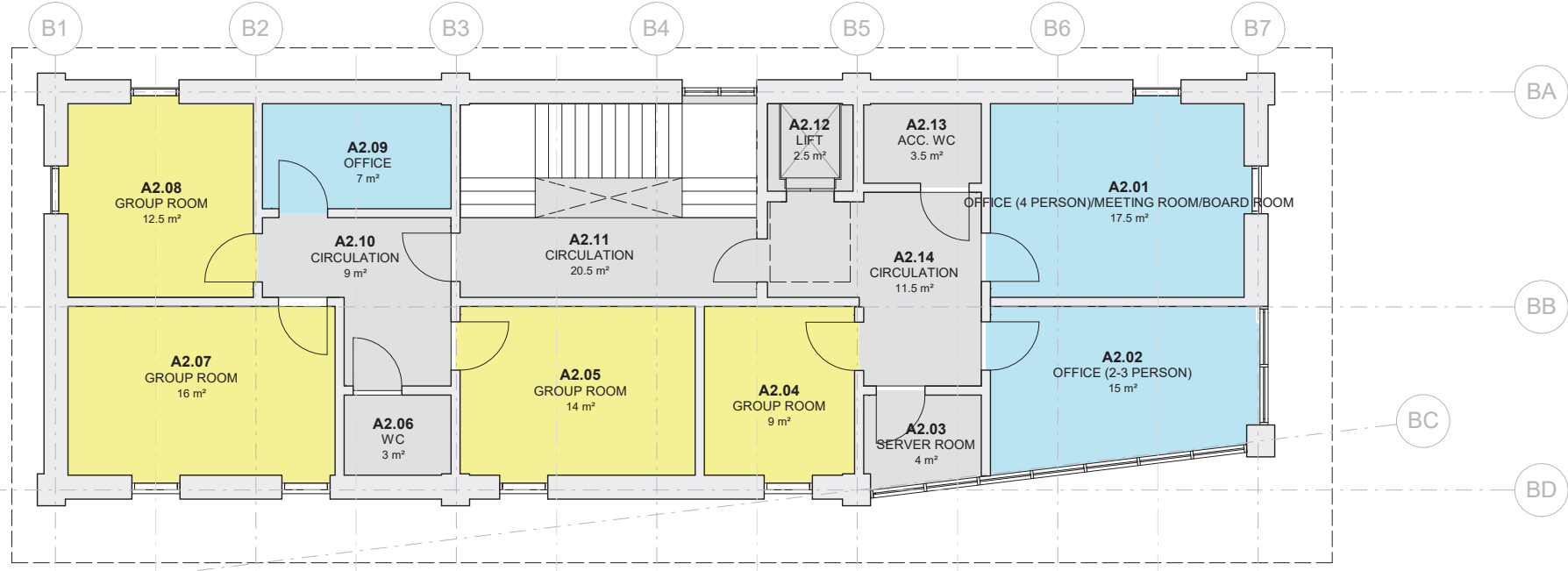
THE PROPOSAL



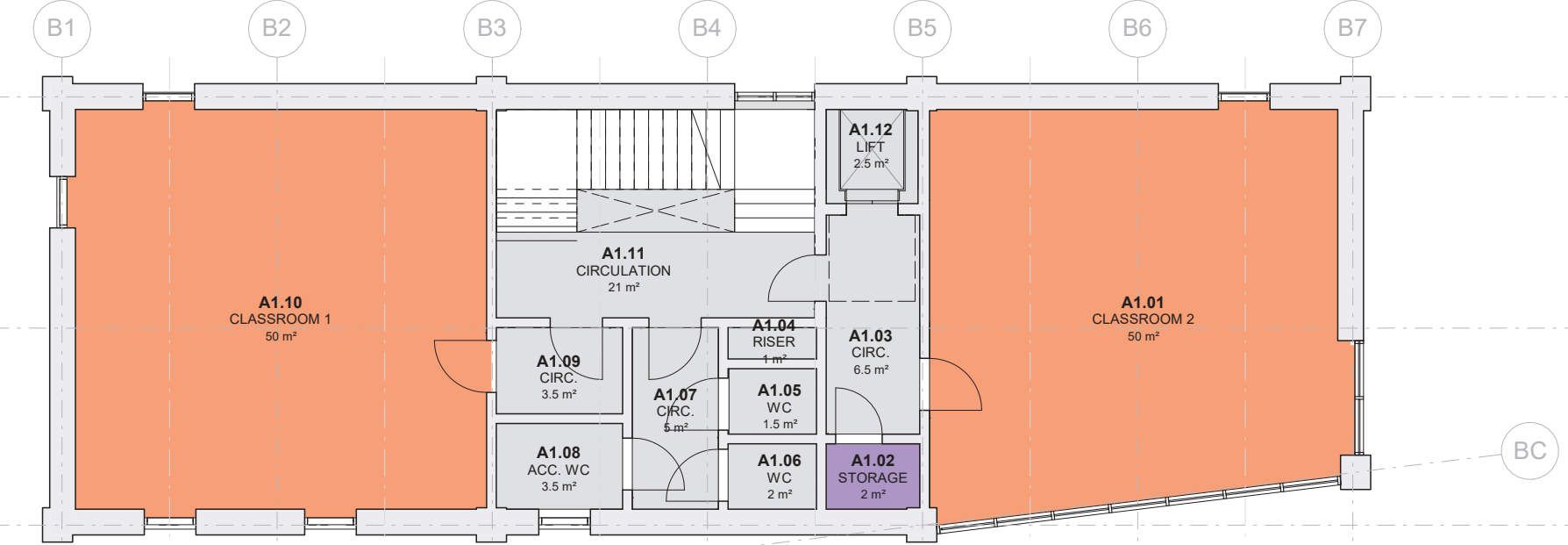
PROPOSED SITE PLAN WITH ROOF PLAN

DEPARTMENTS KEY:

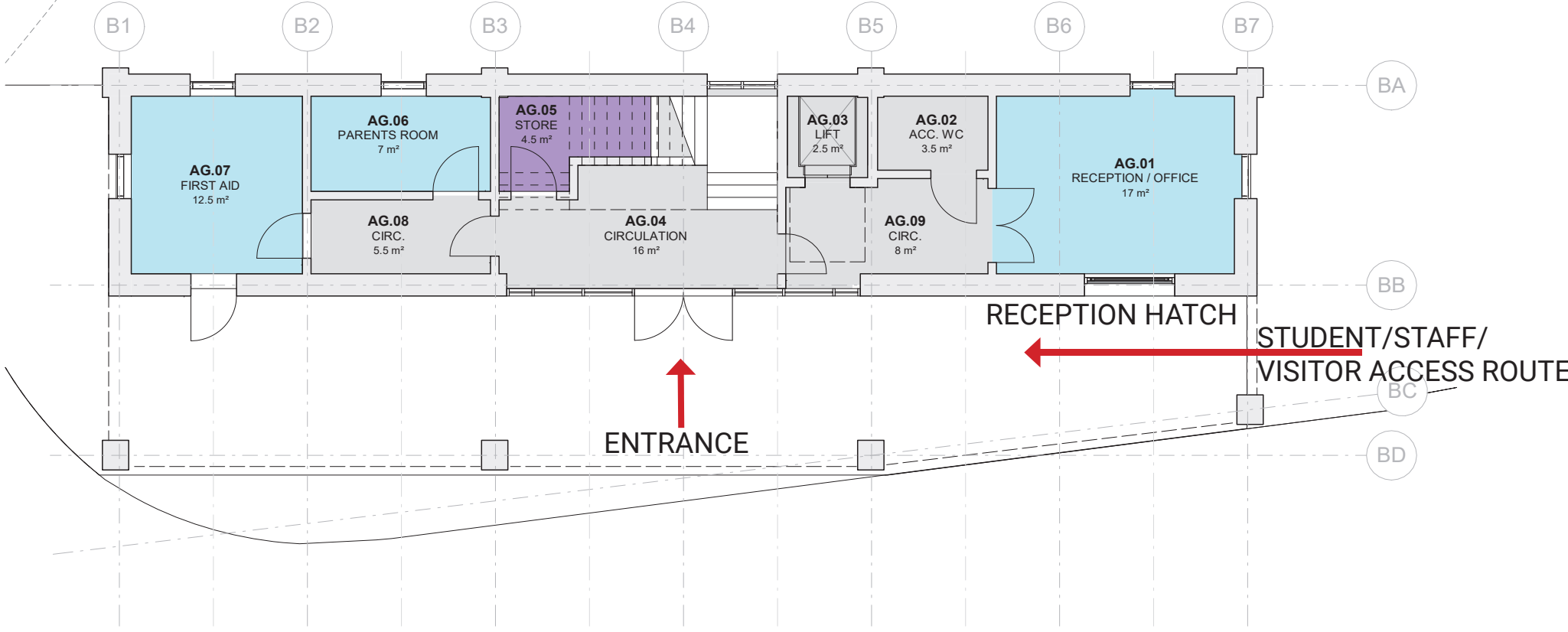
- Teaching
- Learning Resource
- Staff and Administration
- Storage
- Circulation / Ancillary



SECOND FLOOR PLAN



FIRST FLOOR PLAN



GROUND FLOOR PLAN

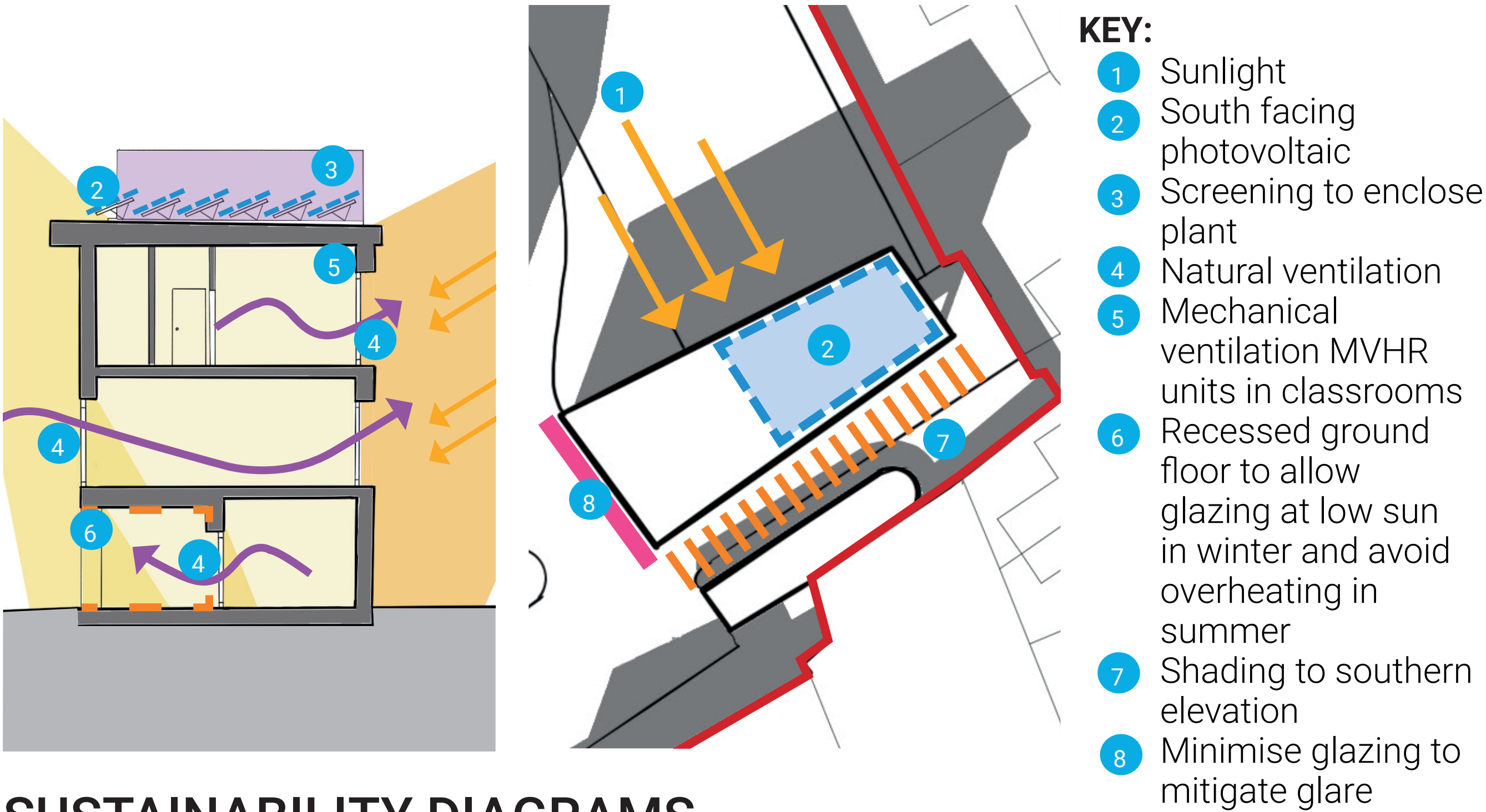


# HAMMERSMITH ACADEMY

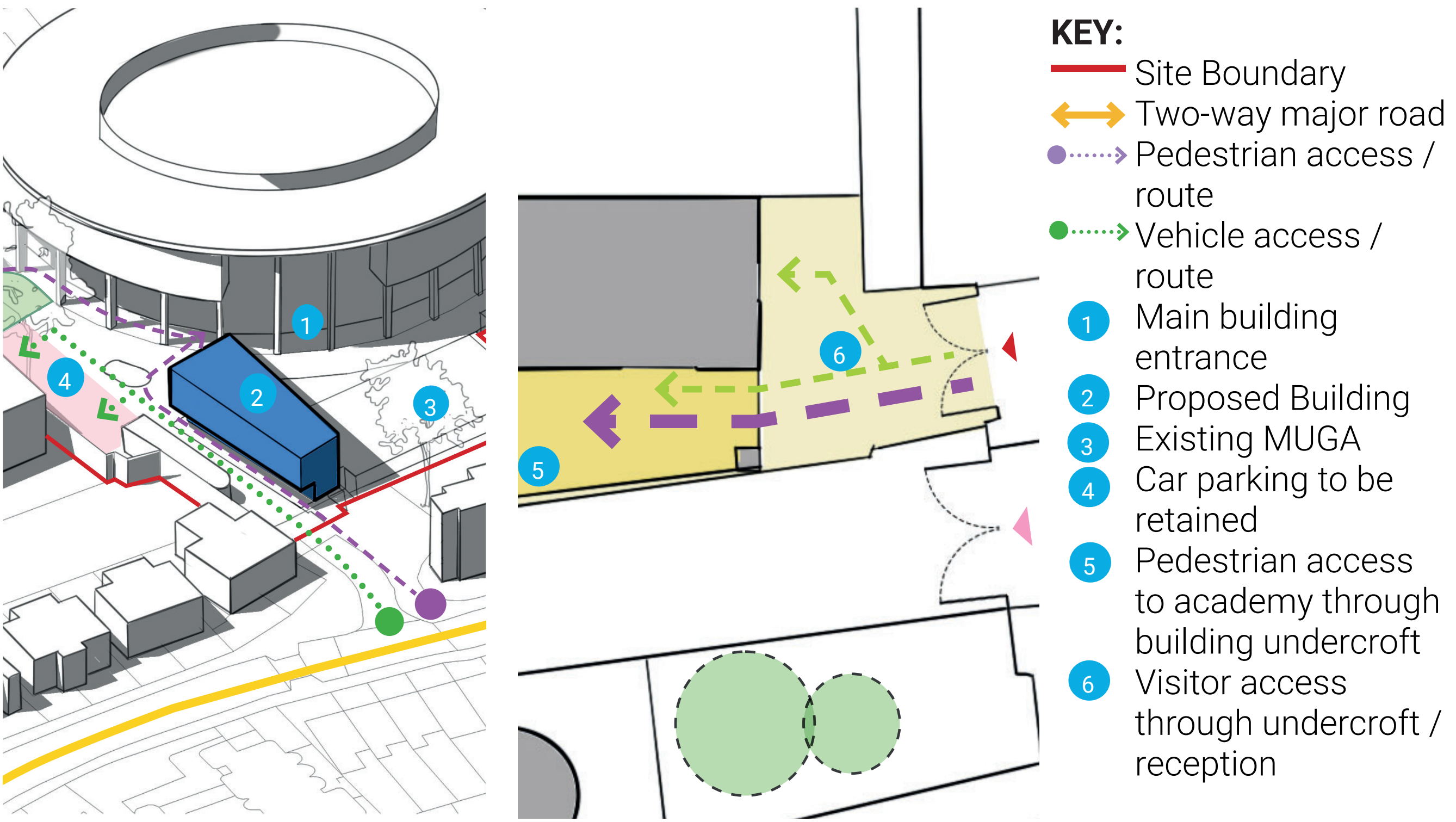
## DESIGN PROPOSALS



3D SKETCH



SUSTAINABILITY DIAGRAMS



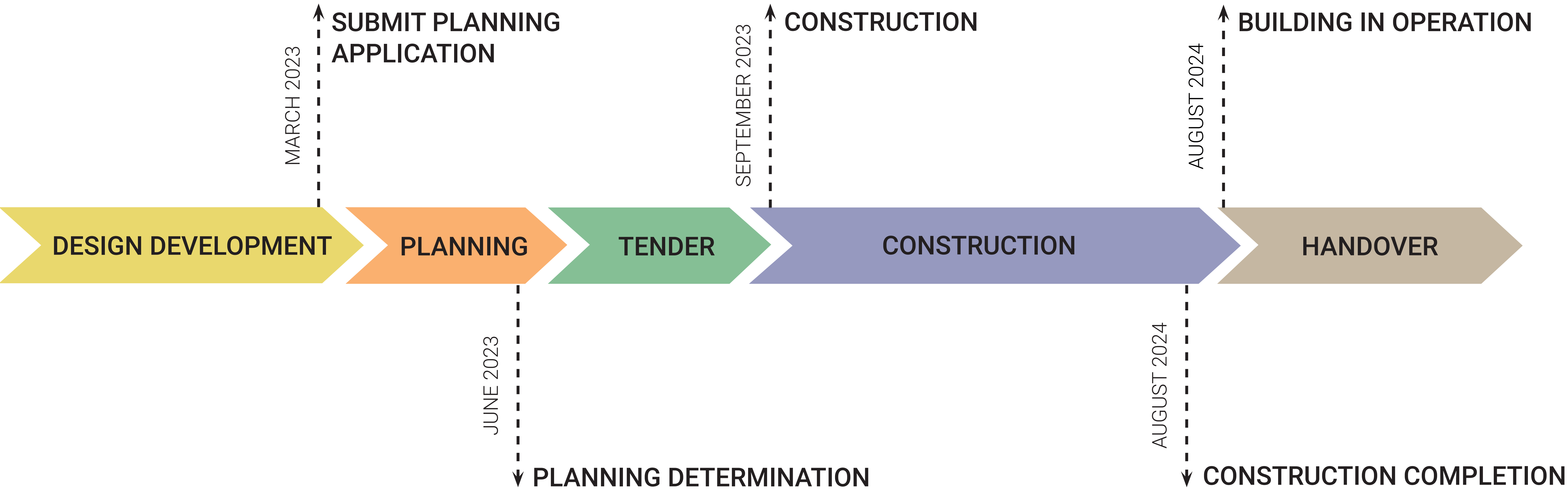
SAFEGUARDING AND MOVEMENT DIAGRAM





HAMMERSMITH ACADEMY

PROGRAMME



SITE IMAGES

